

SERVICE BULLETIN

SB No. 96 Issue No. 1

TITLE
INSPECTION AND REPLACEMENT OF TRIM WHEEL THRUST WASHERS
CLASSIFICATION

This Service Bulletin has been classified by SAL as Recommended

COMPLIANCE Aircraft where trim operation causes interference on headset:
 within next 150 flying hours and at intervals not exceeding 150 hours

APPLICABILITY:

T67C Post Mod M443, T67M260 and T67M260-T3A.

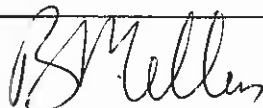
INTRODUCTION:

Cases have been reported of noise in the pilots headsets when the electric elevator trim is operated.

Upon investigation, it was found that if the trim wheel retaining nut is overtightened, indentations are forced into the stainless steel thrust washers by the thrust bearing. A consequence of the overtightening is that a braking action is applied to the trim motor causing the motor to overload.

ACTION

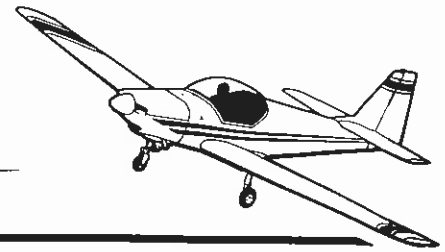
1. Gain access to trim motor and its thrust washers. Ref. Fig. 1.
2. Remove thrust washers.
3. Inspect thrust washers for the following:
 - i) Indentations, ref Fig. 2. If any found, replace with new component.
 - ii) Excessive grooving, ref Fig. 3. If groove measures greater than 1mm wide, replace with new components. Partial grooving is acceptable provided the grooved area is not wider than 1mm, ref Fig 4.

ISSUED BY:


Date 1-10-96

 for and on behalf of **SLINGSBY AVIATION LIMITED** Tel. 01751 432474
 Kirkbymoorside, York YO6 6EZ, England Fax 01751 431173

Page 1 of 4

**SERVICE BULLETIN**

SB No.

96

Issue No.

1

TITLE

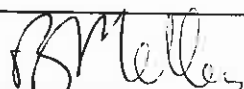
INSPECTION AND REPLACEMENT OF TRIM WHEEL THRUST WASHERS

CONTINUED

4. Ensure when refitting new thrust washers that Maintenance Manual fitting and tightening procedures are adhered to.
5. After i) and ii) actions are satisfied, annotate aircraft log book "SB 96 complied with".

Replacement thrust washers T67C-84-539 may be obtained from SAL Product Support Department.

Approved:

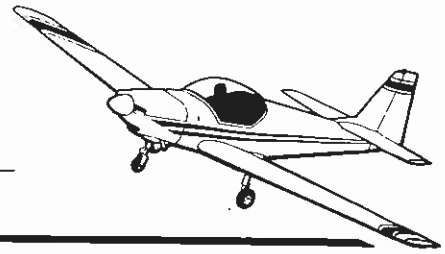


Date: 1-10-96

Page

2 of

4



SERVICE BULLETIN

SB No. 96

Issue No. 1

TITLE

INSPECTION AND REPLACEMENT OF TRIM WHEEL THRUST WASHERS

CONTINUED

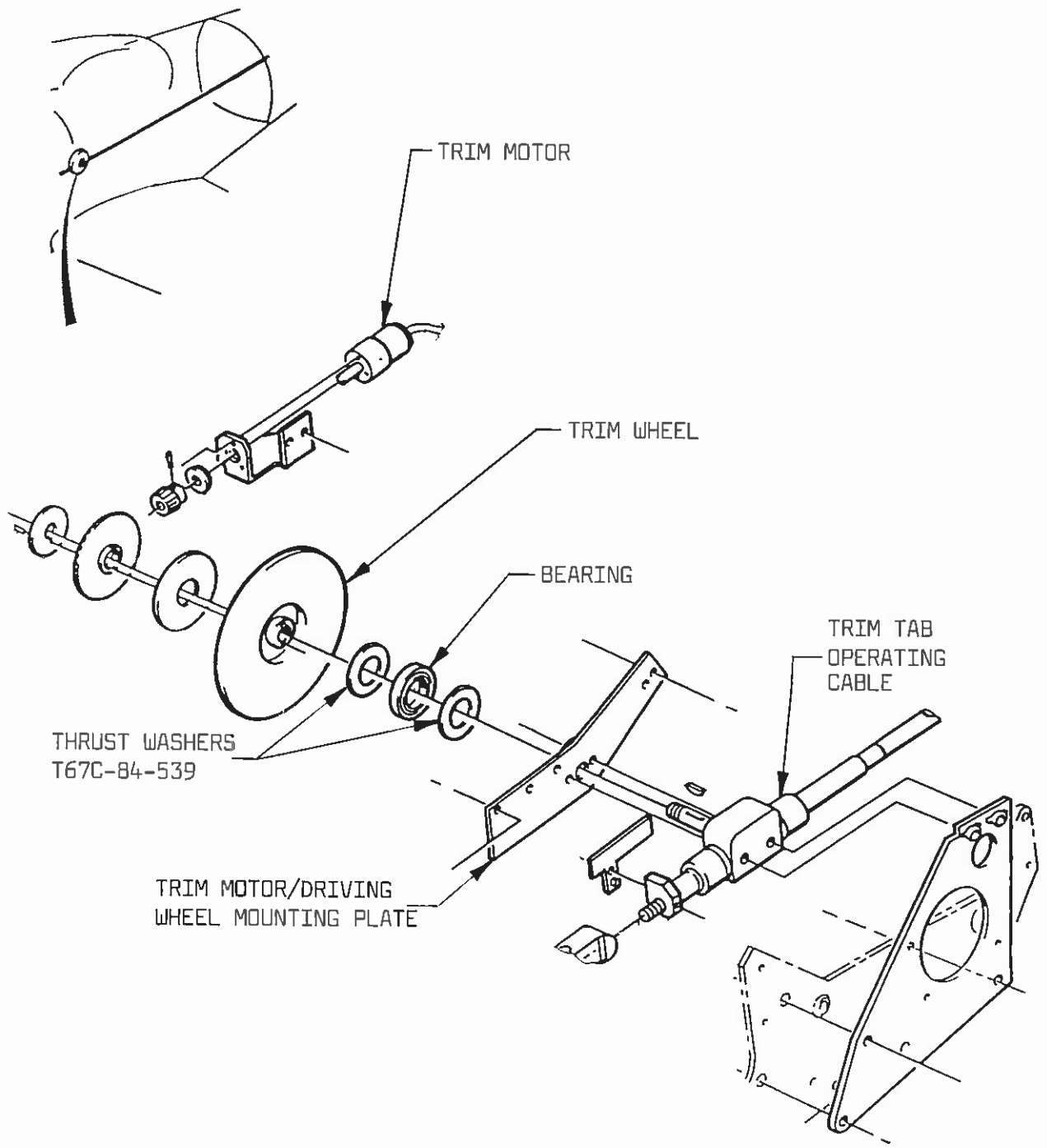
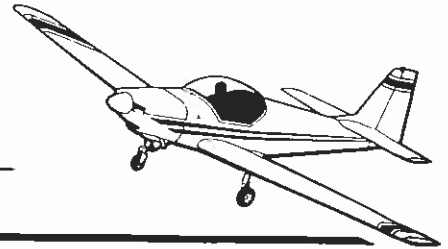


FIG 1
ELECTRIC TRIM DRIVE
THRUST WASHER LOCATION

Approved: *B. M. Kelly*

Date: 1-10-96

Page 3 of 4



SERVICE BULLETIN

SB No.

96

Issue No.

1

TITLE

INSPECTION AND REPLACEMENT OF TRIM WHEEL THRUST WASHERS

CONTINUED

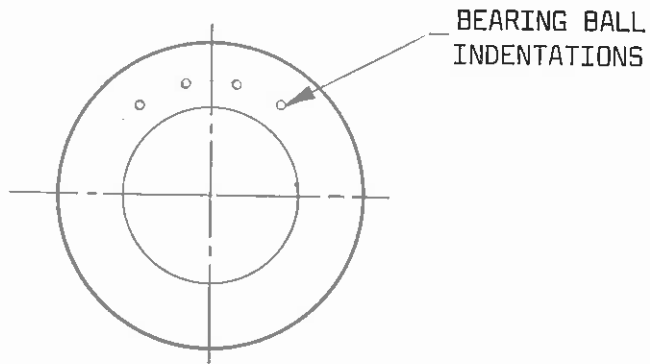


FIG 2
THRUST WASHER INDENTATIONS

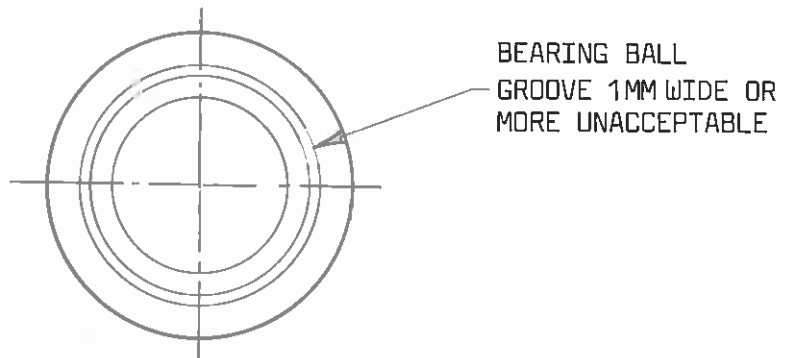


FIG 3
THRUST WASHER GROOVE

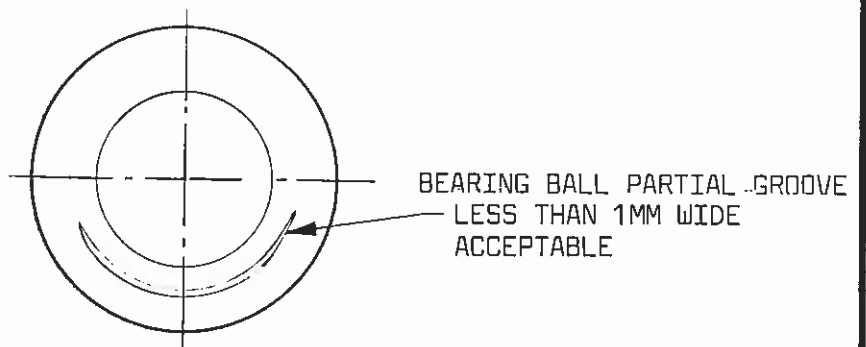


FIG 4
THRUST PARTIAL GROOVE

Approved:

B. Mellis

Date: 1-10-96

Page

4 of

4