

# SERVICE BULLETIN

SB No. 75 Issue No. 3

**TITLE**
**INSPECTION OF RUDDER PEDAL SLIDER/HEATER DISTRIBUTION BOX CLEARANCE**
**CLASSIFICATION**

Highly Recommended

**COMPLIANCE** At next 50 hr check or within one month of receipt of bulletin.

**APPLICABILITY:** All T67M260 and T67M260-T3A aircraft.

**INTRODUCTION:**

During a post delivery inspection a foul was discovered between the square rudder pedal slider and the heater distribution box, in addition the round slider was found to be close to the heater. The foul occurs when the left hand pilot's right hand pedal (Number 2) is adjusted fully forward with full right rudder deflection. Although a foul may occur there is no possibility of jamming the rudder pedal, only a slight restriction in travel.

**ACTION**

1. Check for clearance with No.2 pedal adjusted fully forward, full right rudder with or without applying the brake.
2. Note clearance, 1mm minimum required between square or round slider ends and heater distribution box with foot loads applied.

If clearance achieved, annotate in Log Book "S.B. No.75 complied with".

3. If clearance is found to be inadequate, proceed as follows:
  - 3.1 Check rudder bar packing is in accordance with the following, Ref. Fig. 1:

At each rudder bar pivot position (4 places) there should be one spacer T67M-45-507 OR one off each washer 126-23-748 (AN960-516) and 126-23-749 (AN 960-516L) ie 2 washers.

**ISSUED BY:**

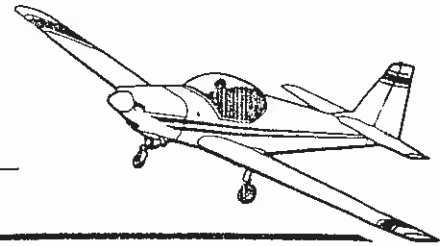
**ISSUED**

- 2 JUN 1995

Date 2-6-95

 for and on behalf of SLINGSBY AVIATION LIMITED  
 Kirkbymoorside, York YO6 6EZ England Tel 0751 32474 Telex 57597

Page 1 of 8

**SERVICE BULLETIN**

SB No.

75

Issue No.

3

TITLE

**INSPECTION OF RUDDER PEDAL SLIDER/HEATER DISTRIBUTION  
BOX CLEARANCE**

CONTINUED

If end float of greater than 0.8mm is present, then 1 off only packing washer may be added at each pivot position as required, ie 126-23-105 M8 washer or 126-23-748 or 126-23-749 washers.

If packing washers are required on the right hand rudder bar (T67M-45-259) then the packing washer (or the thicker washer if a thick and thin washer are required) should be placed at the outboard pivot.

Ensure maximum end float is not greater than 0.8m and that brake cylinders are not subject to undue side load.

If clearance ref 2. is achieved, annotate in Log Book SB No.75 complied with. If not, proceed to 3.2.

3.2 Apply the following rudder set-up procedure:

3.2.1 Jack up front of aircraft until nosewheel is just clear of ground. Set aircraft level longitudinally and laterally.

3.2.2 Position rudder rigging board T67B-88-027 over fin.

3.2.3 Remove cowlings and disconnect steering rod from nosewheel.

3.2.4 Pedal assemblies all to be adjusted fully forward, ie for maximum leg length.

3.2.5 Disconnect turnbuckle barrel from both turnbuckle ends, see Fig. 2.

3.2.6 Re-assemble turnbuckle by simultaneously screwing onto ends ensuring equal engagement. Screw up until all of screw thread is into barrel, see Fig. 3.

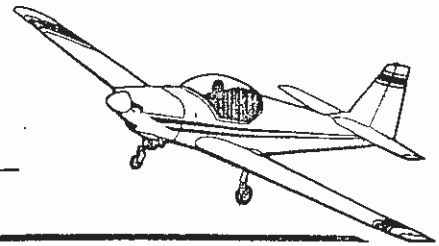
3.2.7 Position straight edge T67G-88-501 across all four pedals (should all touch) check rudder neutral against rigging board.

Approved:



Date: 2-6-95

Page 2 of 8

**SERVICE BULLETIN**

SB No.

75

Issue No.

3

TITLE

**INSPECTION OF RUDDER PEDAL SLIDER/HEATER DISTRIBUTION  
BOX CLEARANCE**

CONTINUED

3.2.8 .i. If rigging board indicates rudder neutral:

Check movements ref Maintenance Manual and set stops, check for fouls.

ii. If movement achieved but pedals foul:

Tighten cables by screwing turnbuckle ends into barrel as required. This effectively pulls pedal assemblies aft (towards tail).

Recheck rudder neutral Ref 7). If rudder not neutral screw in relevant turnbuckle.

3.2.9 Set rudder movement with stops.

3.2.10 Check rudder movements to full extent; using foot loads verify all mechanical clearances, with pedals at all four pedal adjustment positions with and without brake applied. When satisfied wirelock turnbuckles with double figure of eight wire configuration between clevis and diametric hole on turnbuckle barrel.

3.2.11 Reconnect steering arm with rudder neutral and nose wheel centred, adjusting steering arm fork end as required.

3.2.12 If clearance, Ref 1. and 2., is achieved annotate in Log Book "S.B. No.75 complied with". If not, proceed to 3.3.

3.3 Modify pedal assy No.2 as follows:

3.3.1. Remove No.2 pedal assy and modify as per Fig. 4.

Note: Modify both square and round slider.

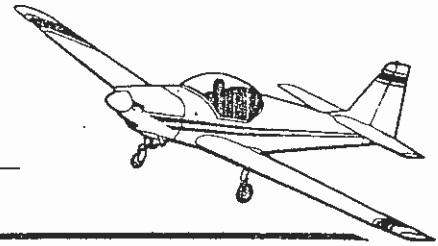
3.3.2 No.2 pedal assy to be re-identified as T67G-45-851 and Mod M663. Annotate Mod M663 incorporated.

Approved:



Date: 2-6-95

Page 3 of 8

**SERVICE BULLETIN**

SB No. 75 Issue No. 3

TITLE

**INSPECTION OF RUDDER PEDAL SLIDER/HEATER DISTRIBUTION  
BOX CLEARANCE**

CONTINUED

3.3.3 If clearance, Ref 1 and 2, is achieved, annotate in Log Book "S.B. No. 75 complied with". If not proceed to 3.4.

3.4 Check heater box seating as follows. Ref Fig 5.

3.4.1 Remove heater box and counter bore holes in accordance with Fig. 5 Section A-A.

3.4.2 Replace box and check seating. If box top flange fouls cleat cloth joining frame 1 to frame 2 then it is to be removed in accordance with Fig.5 Section B-B.

3.4.3 Replace box. If clearance, ref 1 & 2 is achieved, annotate in Log Book "SB No.75 complied with".

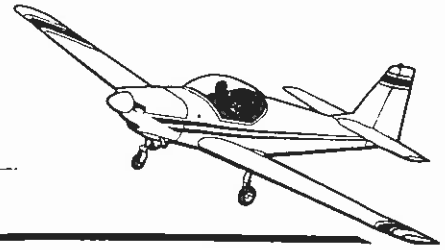
3.4.3 If clearance is not achieved then inform SAL.

Approved:



Date: 2-6-95

Page 4 of 8



**SERVICE BULLETIN**

SB No. 75 Issue No. 3

TITLE

**INSPECTION OF RUDDER PEDAL SLIDER/HEATER DISTRIBUTION BOX CLEARANCE**

CONTINUED

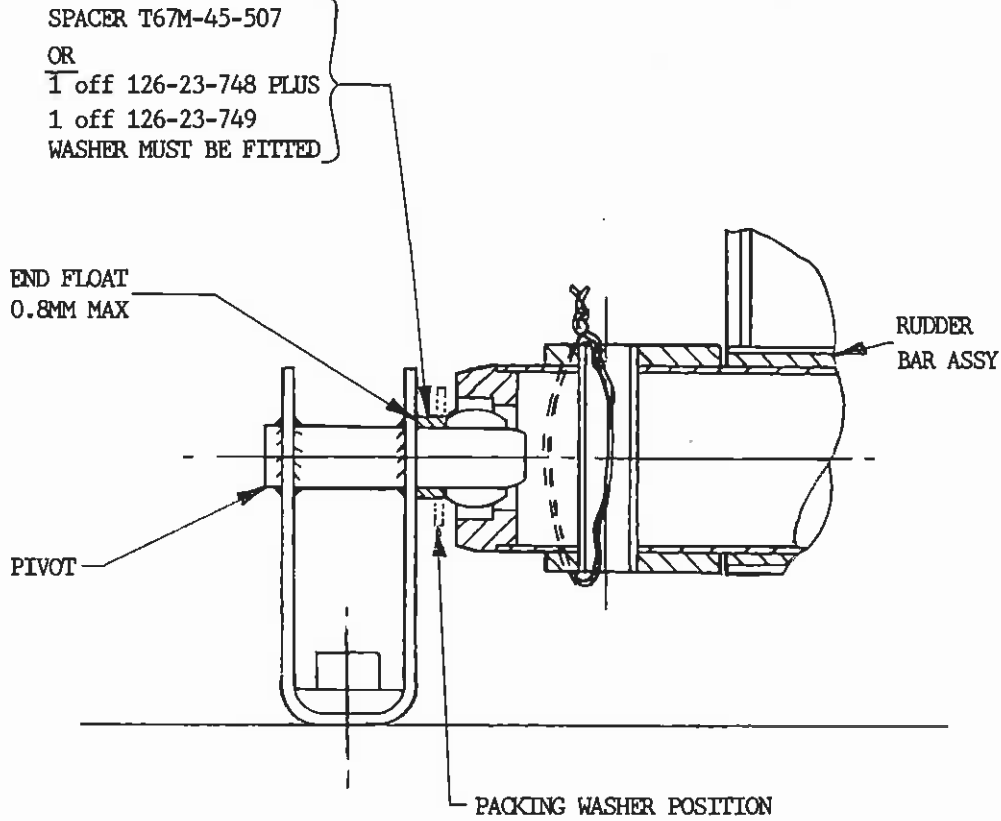


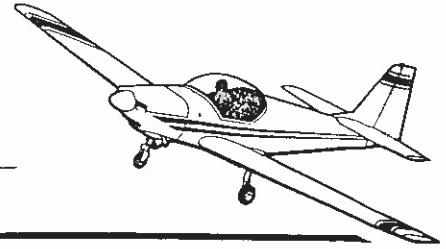
FIG 1

Approved:

*R. Mellen*

Date: 2-6-85

Page 5 of 8



# SERVICE BULLETIN

SB No.

75

Issue No.

3

TITLE

**INSPECTION OF RUDDER PEDAL SLIDER/HEATER DISTRIBUTION  
BOX CLEARANCE**

CONTINUED

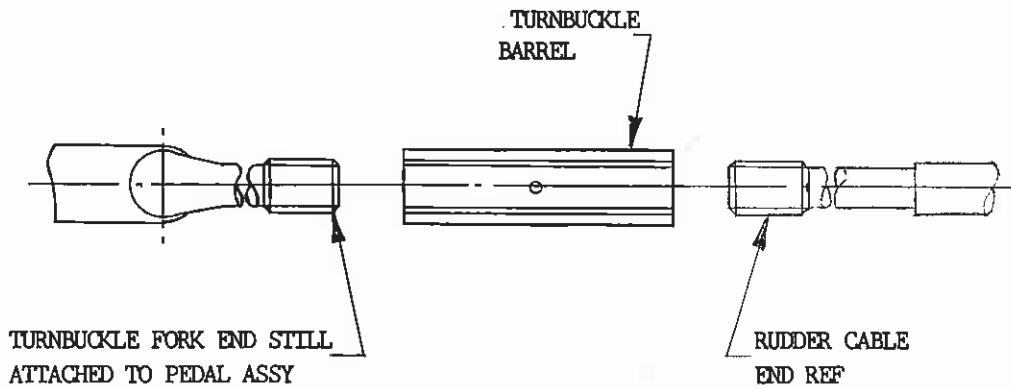


FIG 2

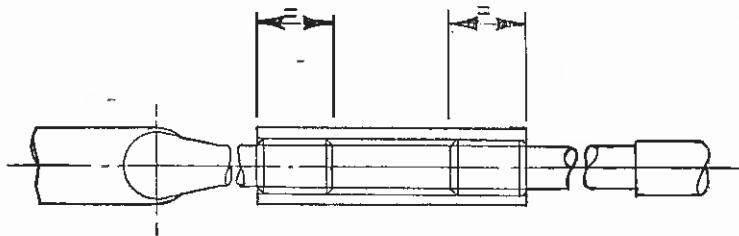


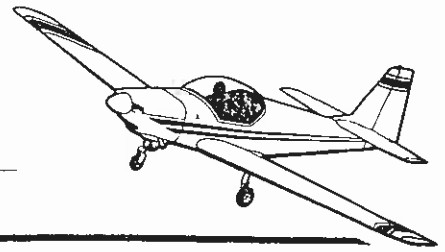
FIG 3

Approved:

*R. Mellen*

Date: 2-6-95

Page 6 of 8



**SERVICE BULLETIN**

SB No. 75 Issue No. 3

TITLE

**INSPECTION OF RUDDER PEDAL SLIDER/HEATER DISTRIBUTION BOX CLEARANCE**

CONTINUED

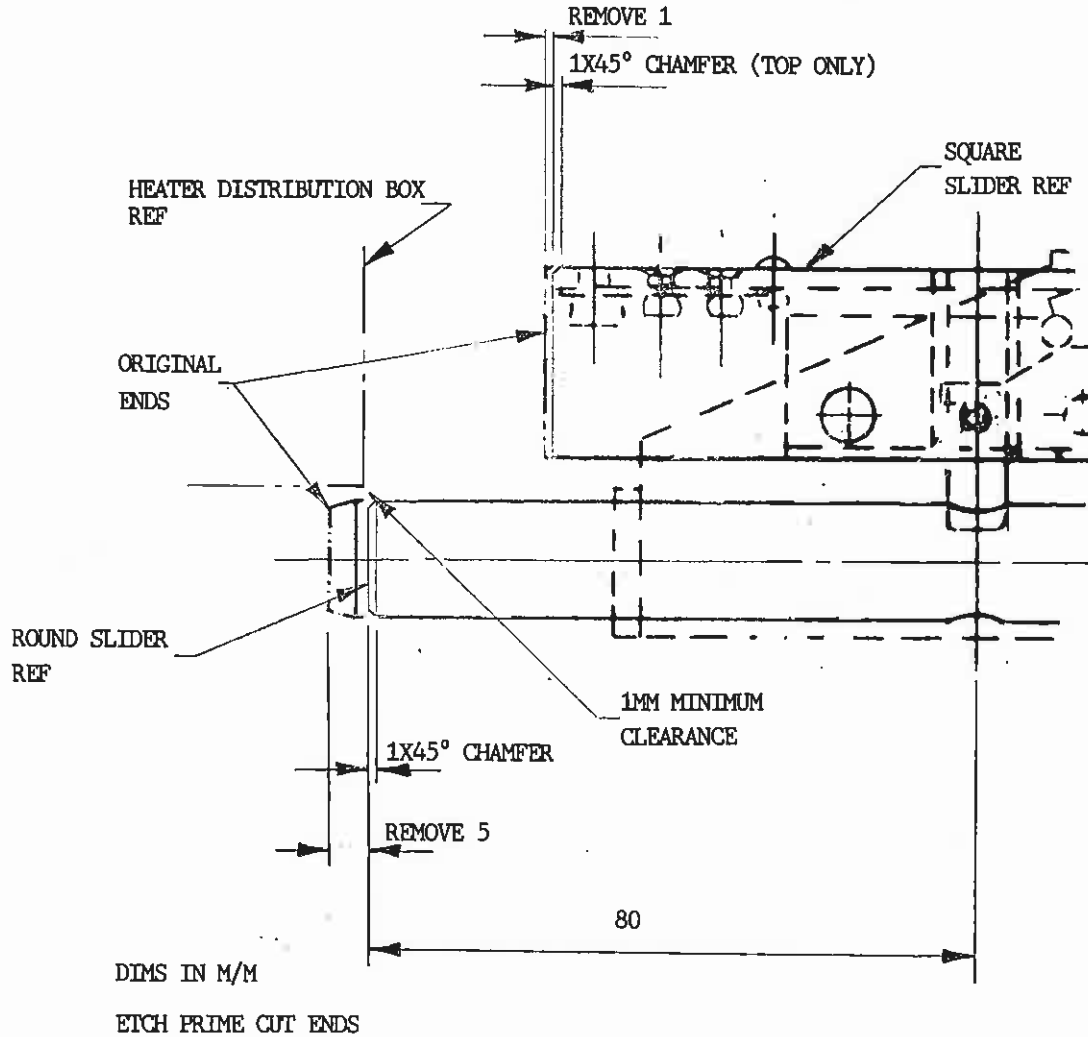


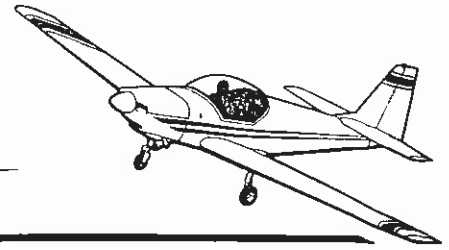
FIG 4

Approved:

*B. Mellen*

Date: 2-6-95

Page 7 of 8



**SERVICE BULLETIN**

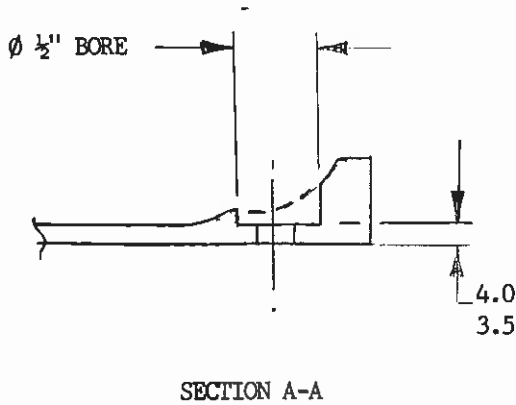
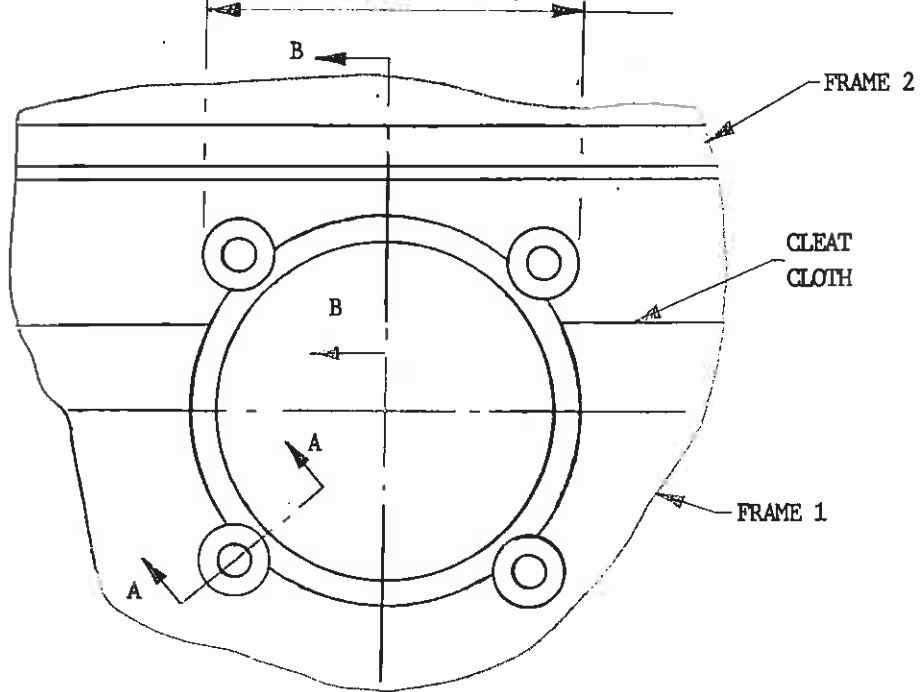
SB No. 75 Issue No. 3

TITLE

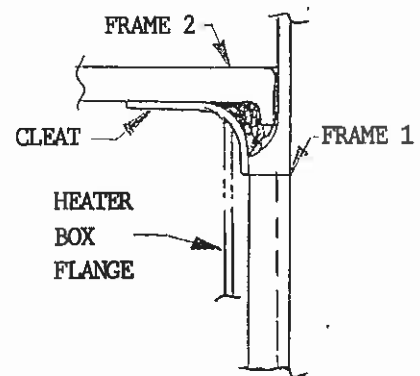
**INSPECTION OF RUDDER PEDAL SLIDER/HEATER DISTRIBUTION BOX CLEARANCE**

CONTINUED

CLEAT REMOVE MINIMUM REQUIRE TO SEAT HOT AIR BOX



SECTION A-A



SECTION B-B

FIG 5

Approved:

*R. Mellen*

Date: 2-6-95

Page 8 of 8